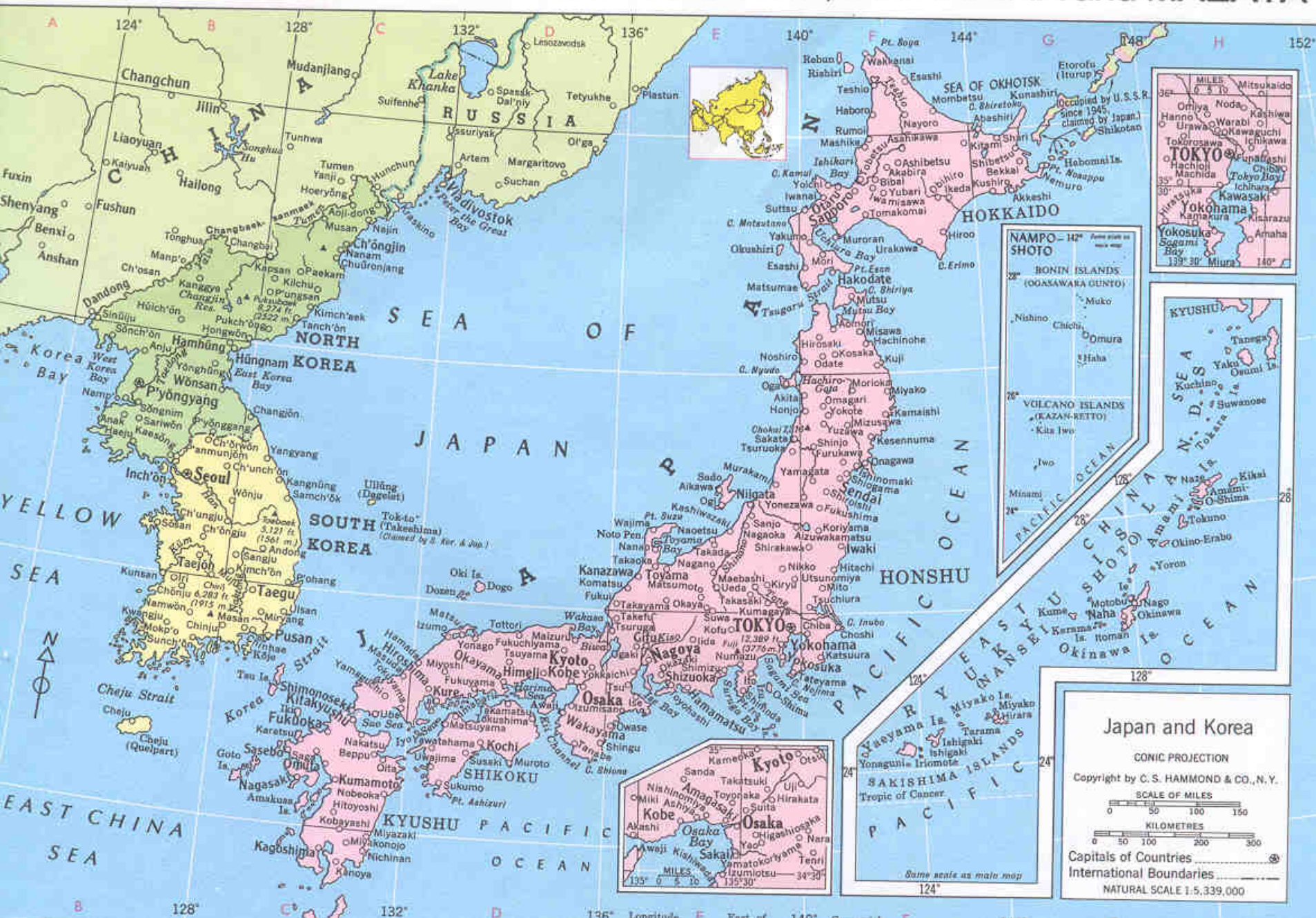


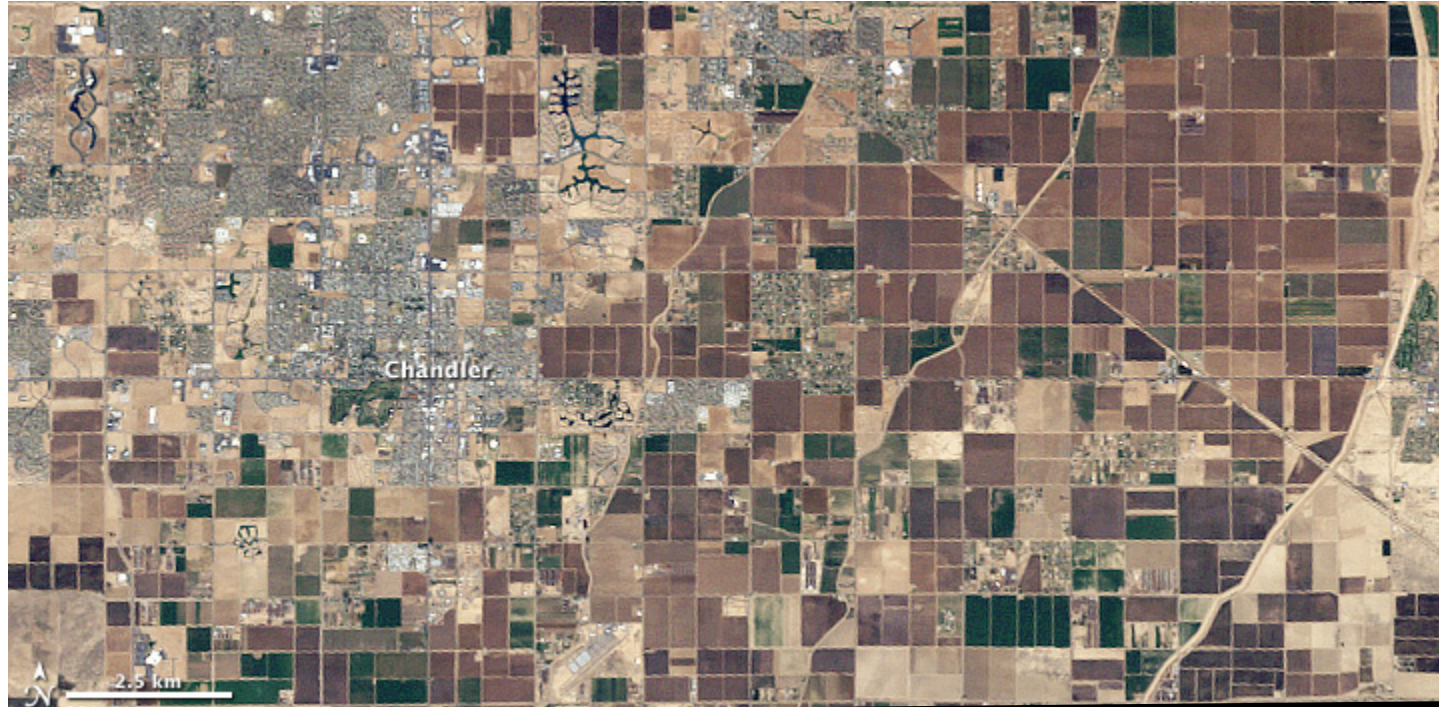
JAPAN and KOREA; BURMA, THAILAND, INDOCHINA and MALAYA



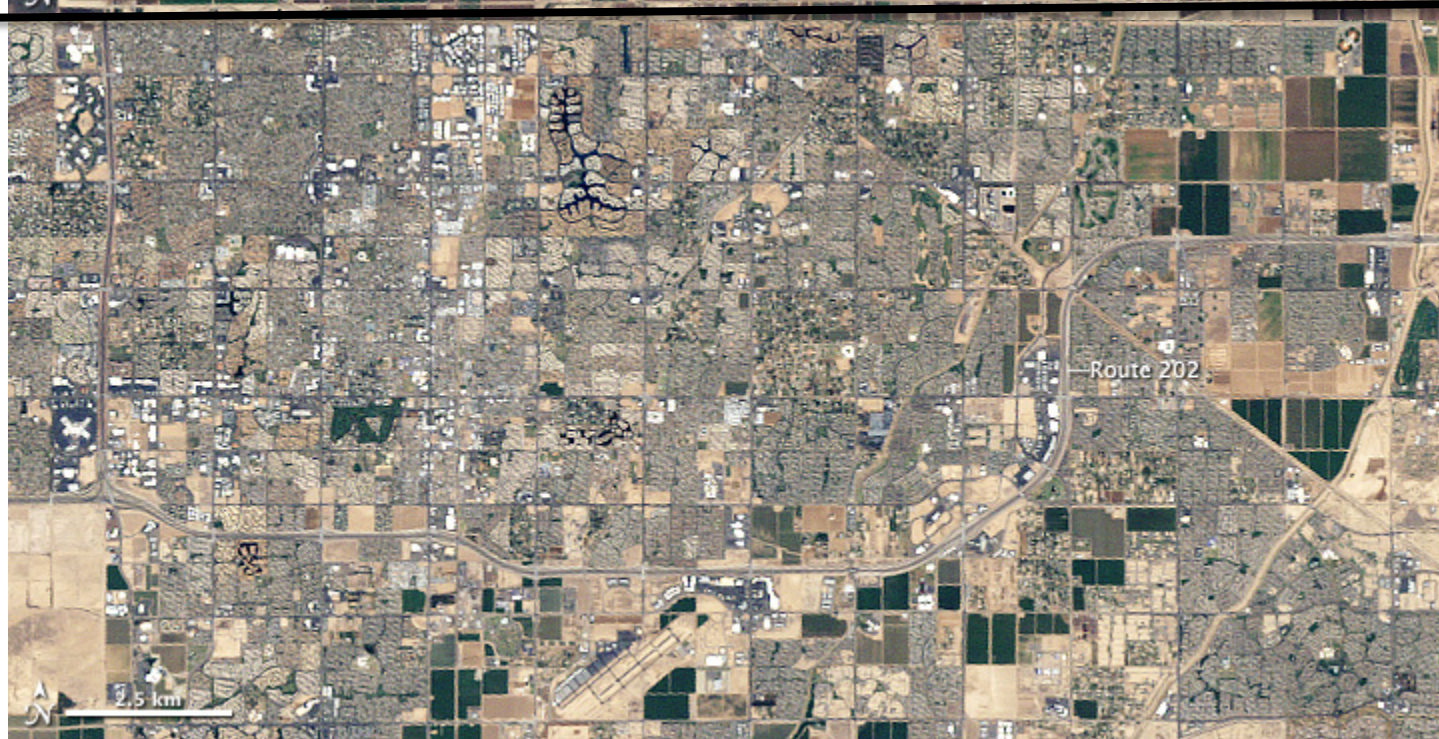




1989

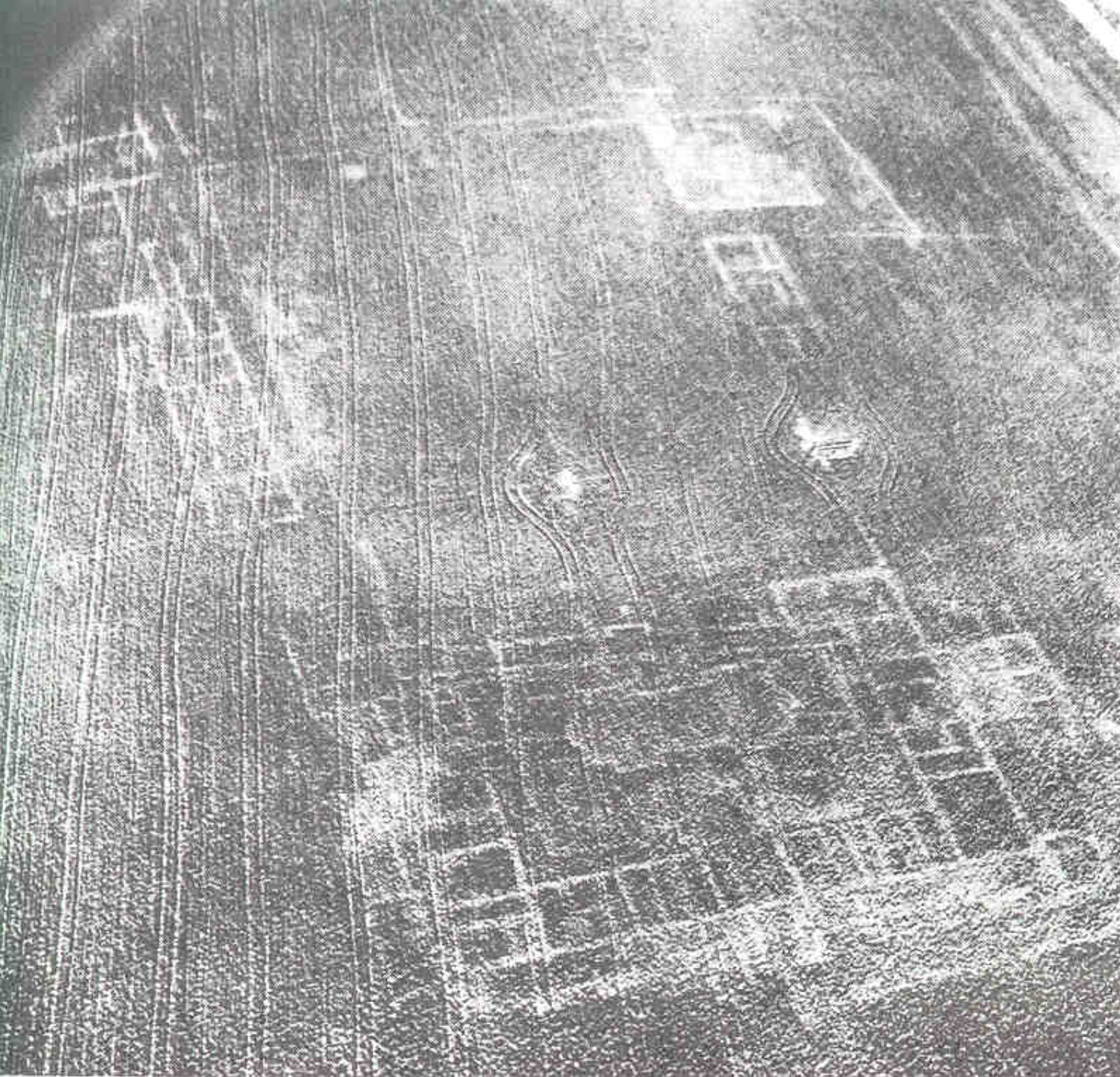


2009





On October 4, 2010, an accident occurred at the Ajkai Timföldgyár alumina (aluminum oxide) plant in western Hungary. A corner wall of a waste-retaining pond broke, releasing a torrent of toxic red sludge down a local stream. Several nearby towns were inundated, including Kolontar and Devecser, where the sludge was 2 meters (6.5 feet) deep in places. Four people were killed immediately, likely from drowning, and several more were missing. Dozens of residents were hospitalized for chemical burns.



**Oblique 35-mm
air photo of a
cereal crop field
in northern
France.
Differences in
crop vigor reveal
the foundation
of a Roman villa.**

Underground Steam System Leaks

Leak

4108.9928N, 08120.8215W, 1.06, 1.2, 1176
000:1838:38.163, 65.0, 321.0, 110198,









Judge rules Kentucky man had the right to shoot down his neighbor's drone

By **James Vincent** on October 28, 2015 09:21 am [@jjvincent](#)



[f](#) Share on Facebook (2,569)

[t](#) Tweet (475)

[in](#) Share (53)

[p](#) Pin

**BEST
BUY**

EXPERT SERVICE. UNBEATABLE PRICE.

TRY IT ON
AT THE SAMSUNG
EXPERIENCE SHOP
ONLY @ BEST BUY®

SAMSUNG
Gear S2

[Shop Now](#)*See Price Match Guarantee details online at BestBuy.com/PMG©2015 Best Buy**THE
LATEST****HEADLINES**

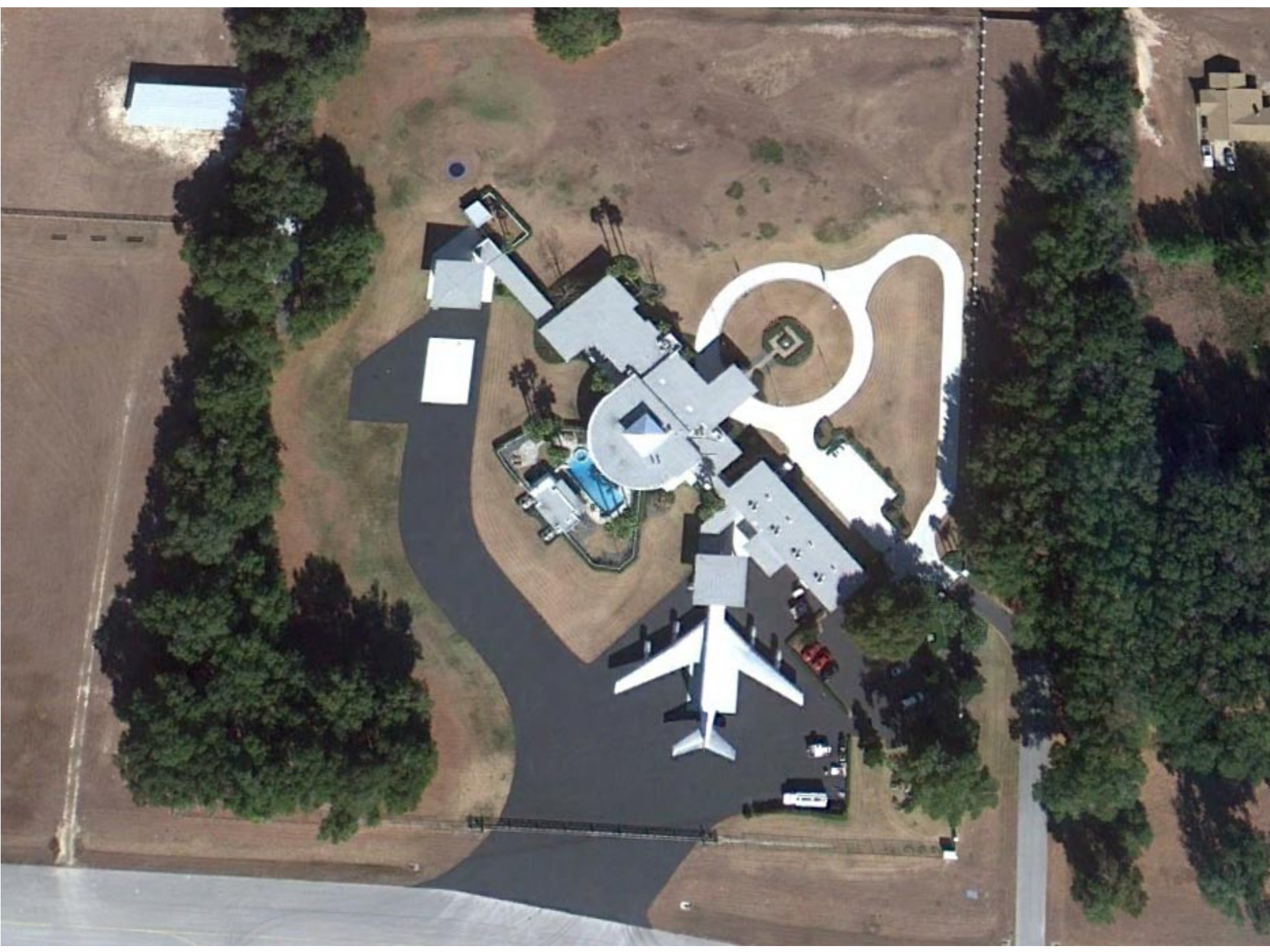
Gest is like a Nintendo Power Glove you might actually want to use

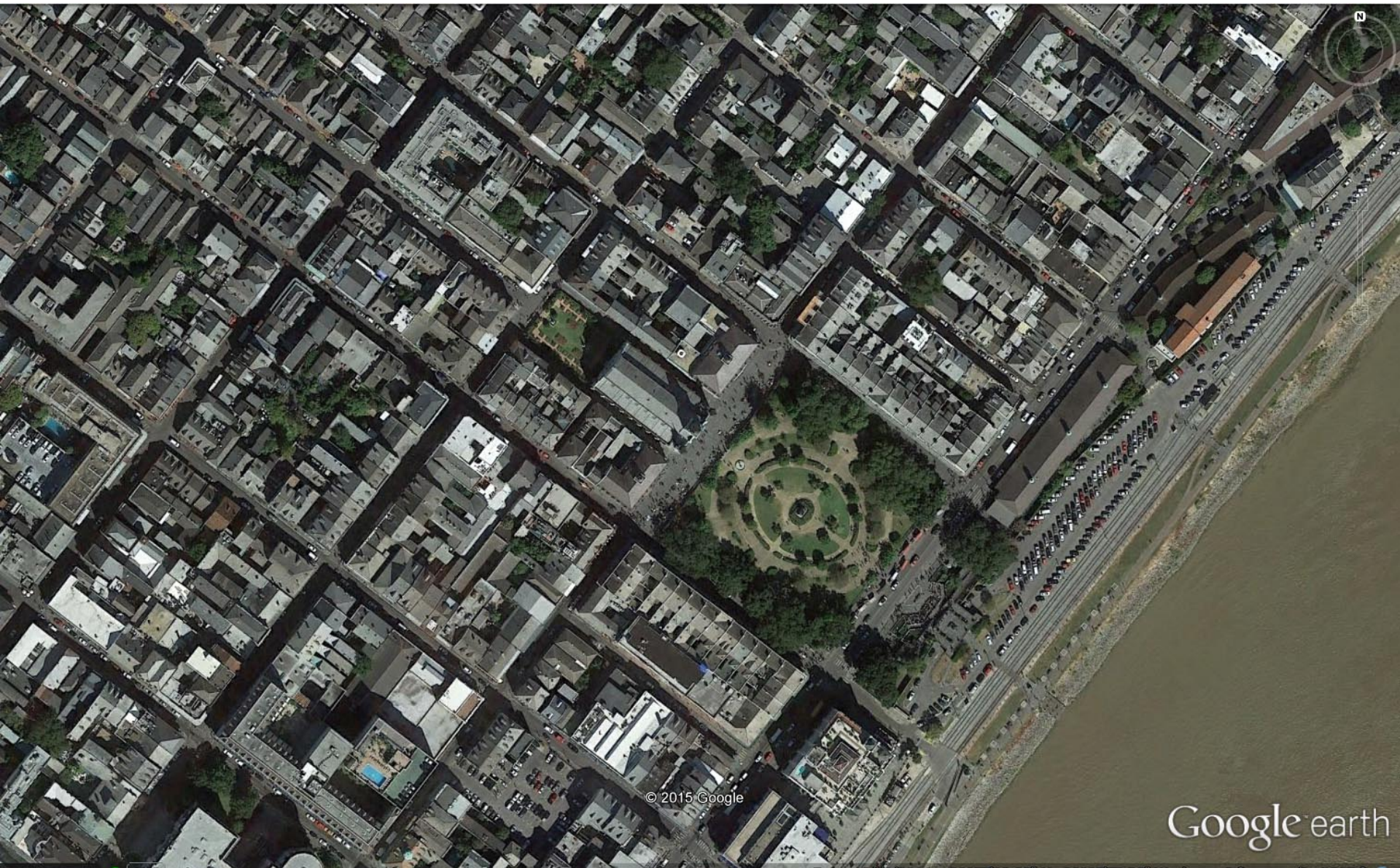


The Moto X Force is the international version of the Droid Turbo 2









© 2015 Google

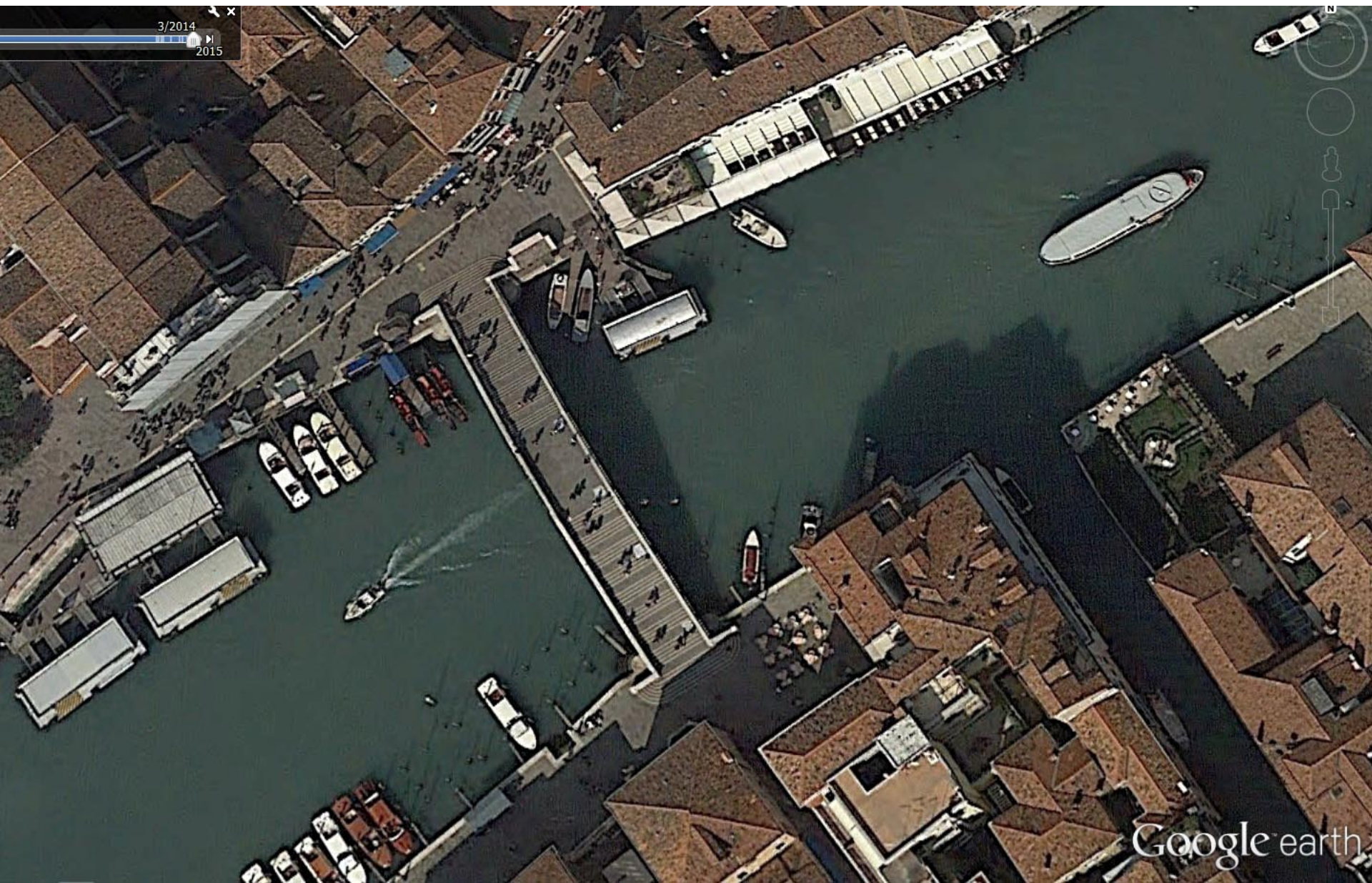
Google earth





Image © 2015 DigitalGlobe

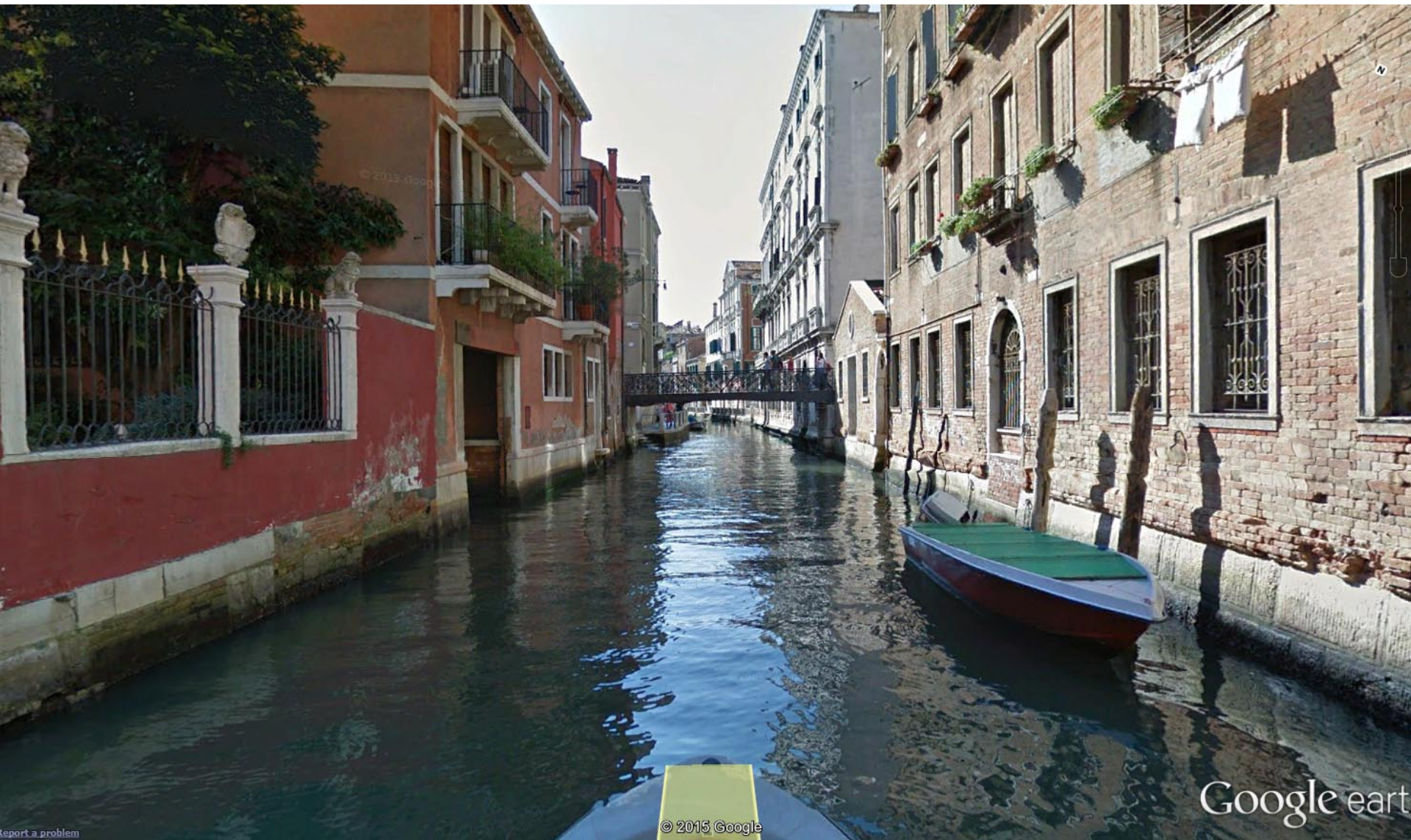
Google e



3/2014

2015

Google earth



[Report a problem](#)

© 2015 Google

Google earth



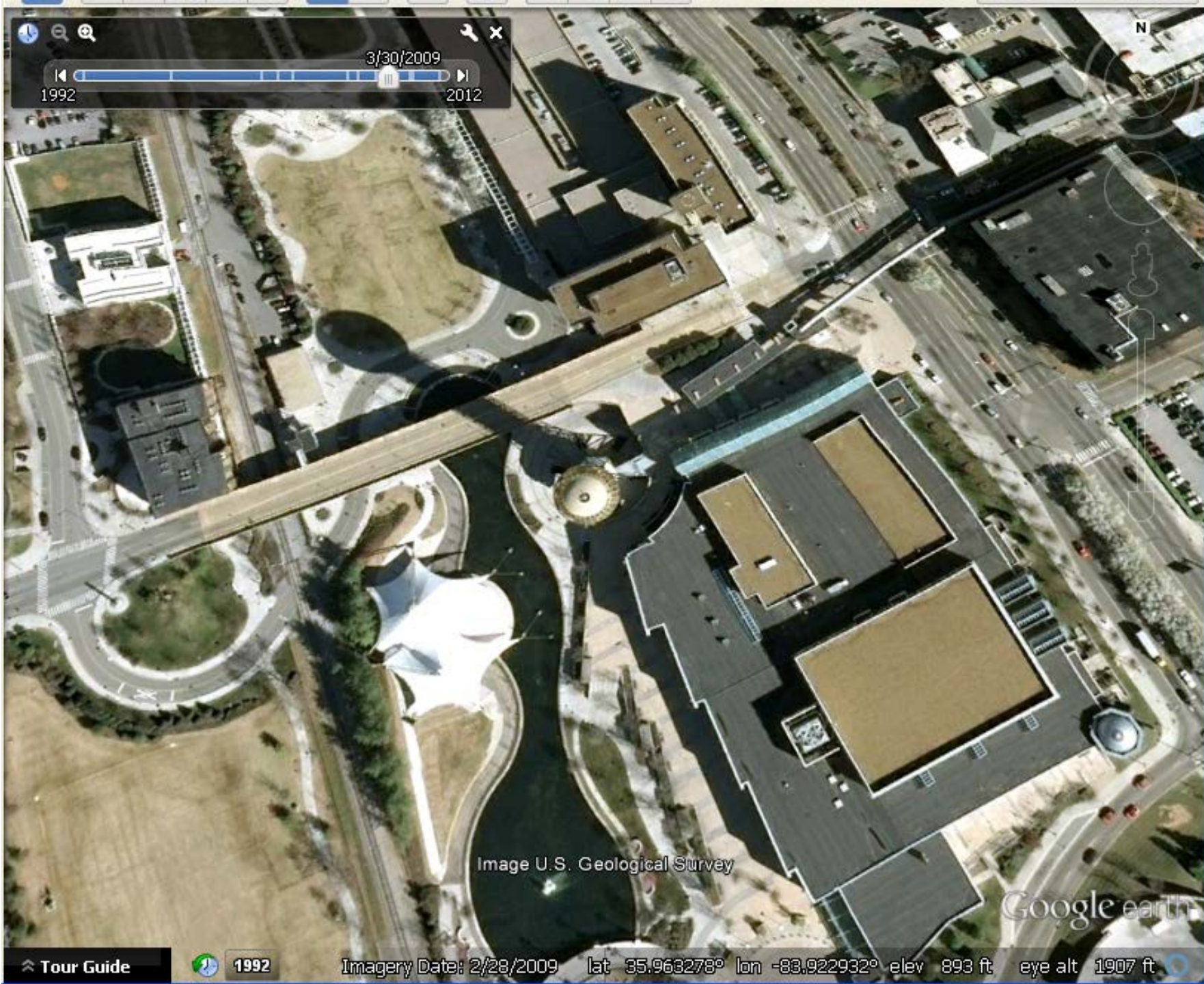
3/2009

2014

Image U.S. Geological Survey

Google earth

Imagery Date: 2/28/2009 35.8572563° N 89.9550055° W elev: 0 ft eye alt: 0.911 ft



3/30/2009

1992

2012

Image U.S. Geological Survey

Google earth

⤴ Tour Guide



1992

Imagery Date: 2/28/2009

lat 35.963278° lon -83.922932° elev 893 ft

eye alt 1907 ft





Image U.S. Geological Survey

Google earth

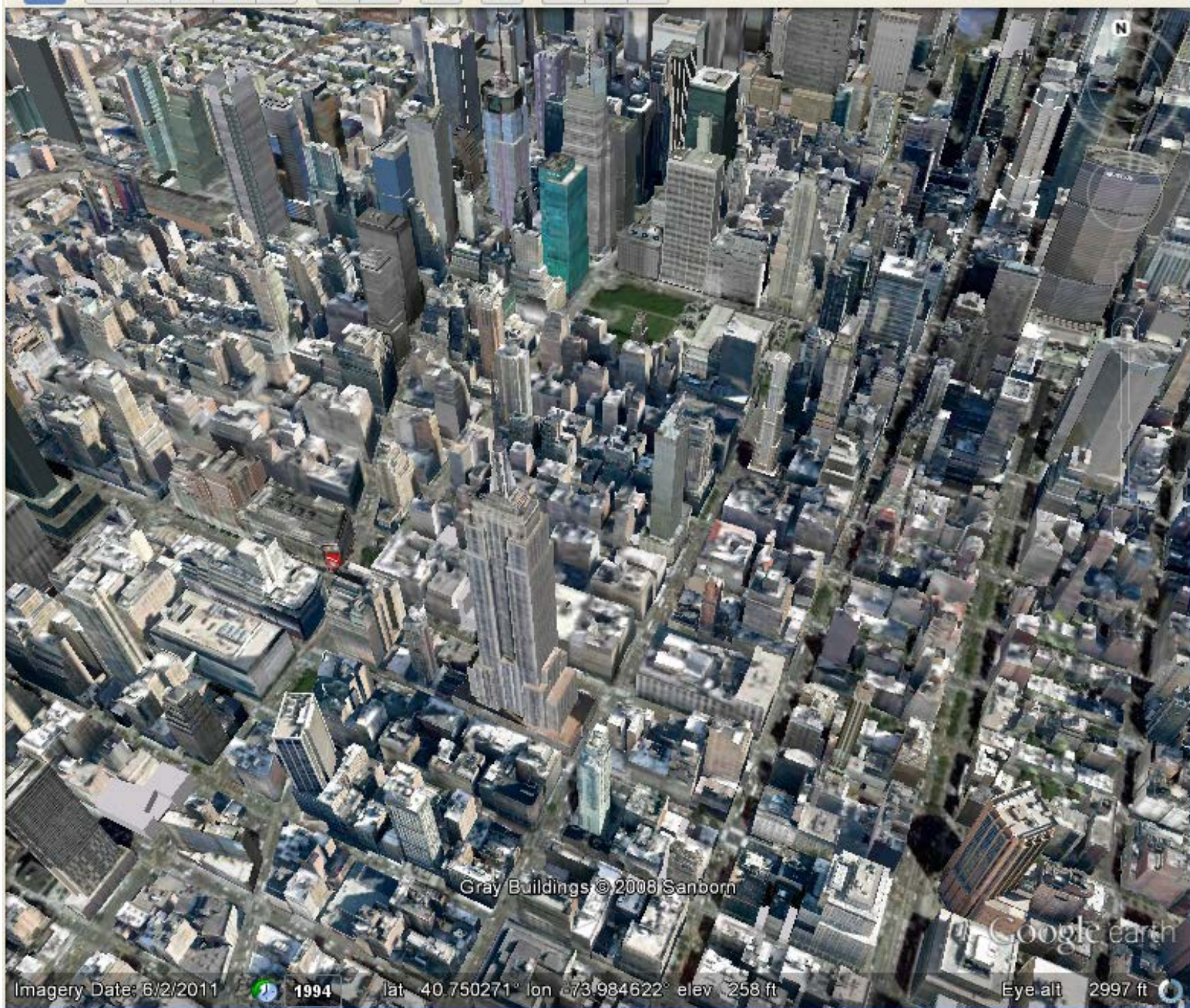
⬆ Tour Guide



1992

Imagery Date: 2/28/2009

lat 35.961718° lon -83.924001° elev 877 ft eye alt 1483 ft



Gray Buildings © 2008 Sanborn

Google earth

Imagery Date: 6/2/2011



1994

lat 40.750271° lon -73.984622° elev 258 ft

Eye alt 2997 ft

st_v...

Google...

Micros...



Search Desktop



2:54 PM



Image © 2015 DigitalGlobe

Google earth

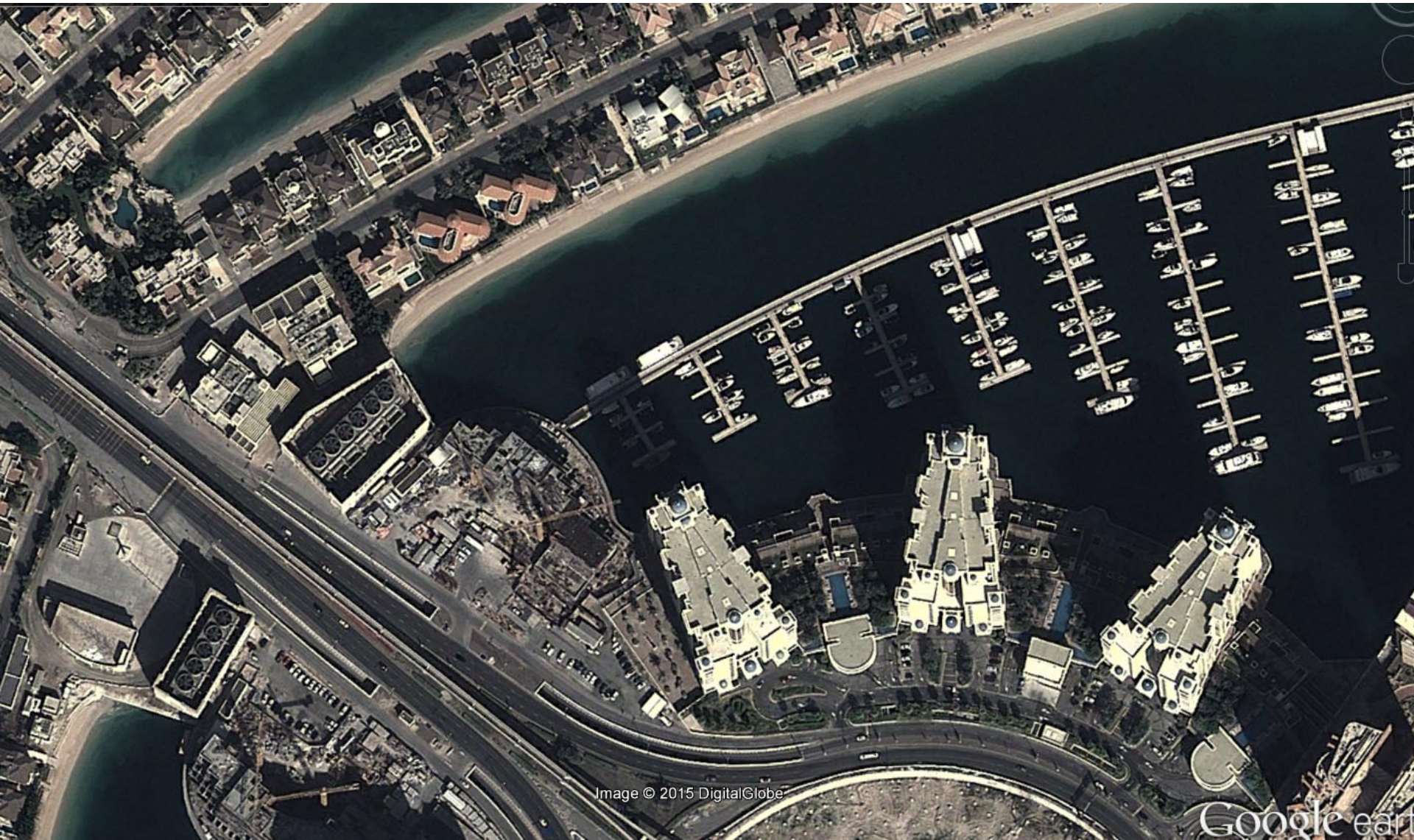


Image © 2015 DigitalGlobe

Google earth



Image © 2015 DigitalGlobe
Image NASA

Google e

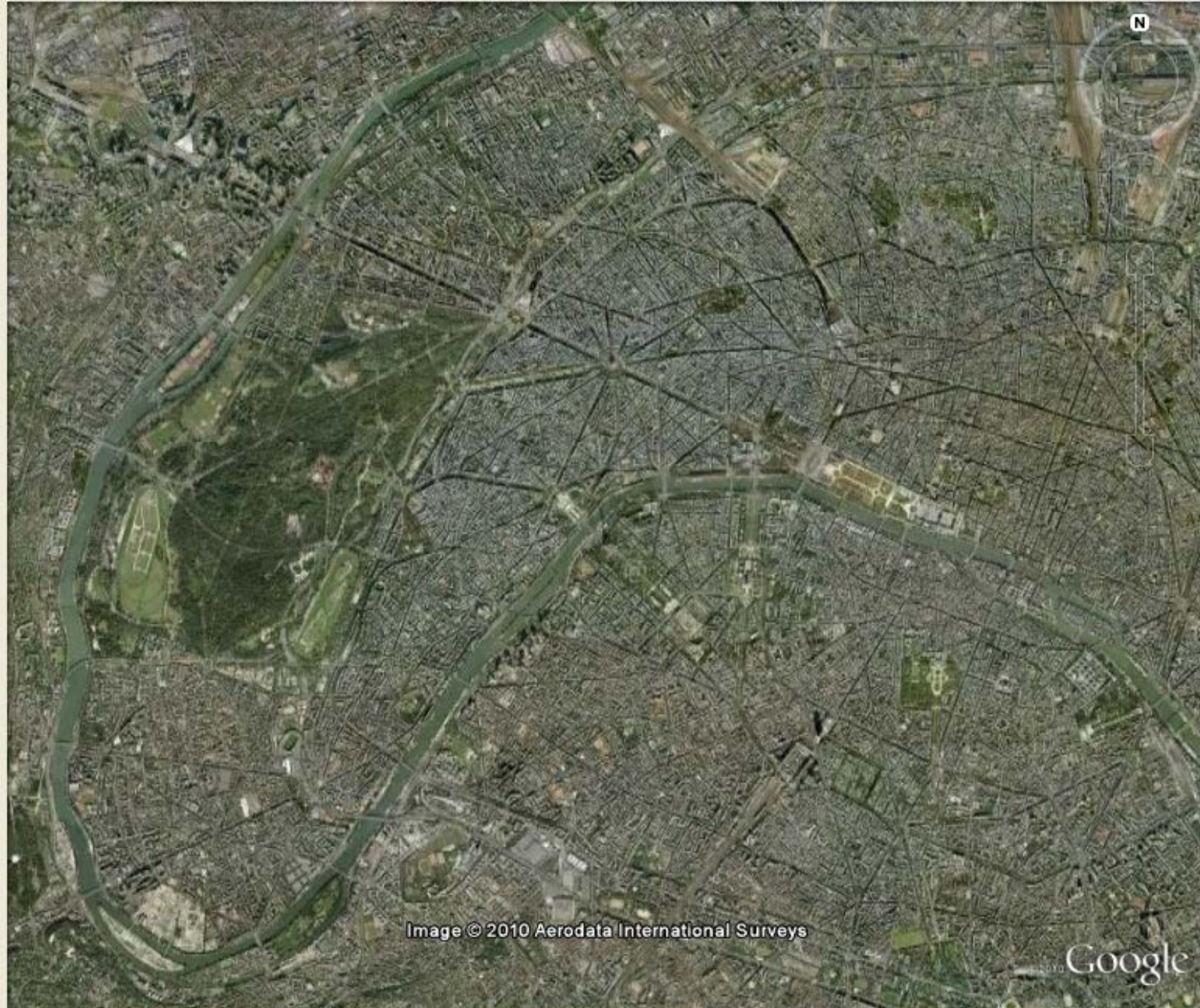


Image © 2010 Aerodata International Surveys

Google

Imagery Date: Oct 21, 2007

48°51'35.00" N 2°17'13.67" E elev 47 m

Eye alt 9.94 km



Image © 2010 Aerodata International Surveys

Google

Imagery Date: Oct 21, 2007

48°51'35.80"N

2°17'44.81"E

elev 33 m

Eye alt 1.03 km



Google earth

Image USGS

Imagery Date: 12/31/2007  2000 lat 21.365479° lon -157.953201° elev 17 ft

Eye alt 2582 ft 

 Mic...

 ima...

 Go...

 ? 

Search Desktop

















2:34 PM



Image USGS

Imagery Date: 12/31/2007



2000

lat 21.364781° lon -157.950369° elev -1 ft

Eye alt

649 ft



Mic...

ima...

Go...



Search Desktop

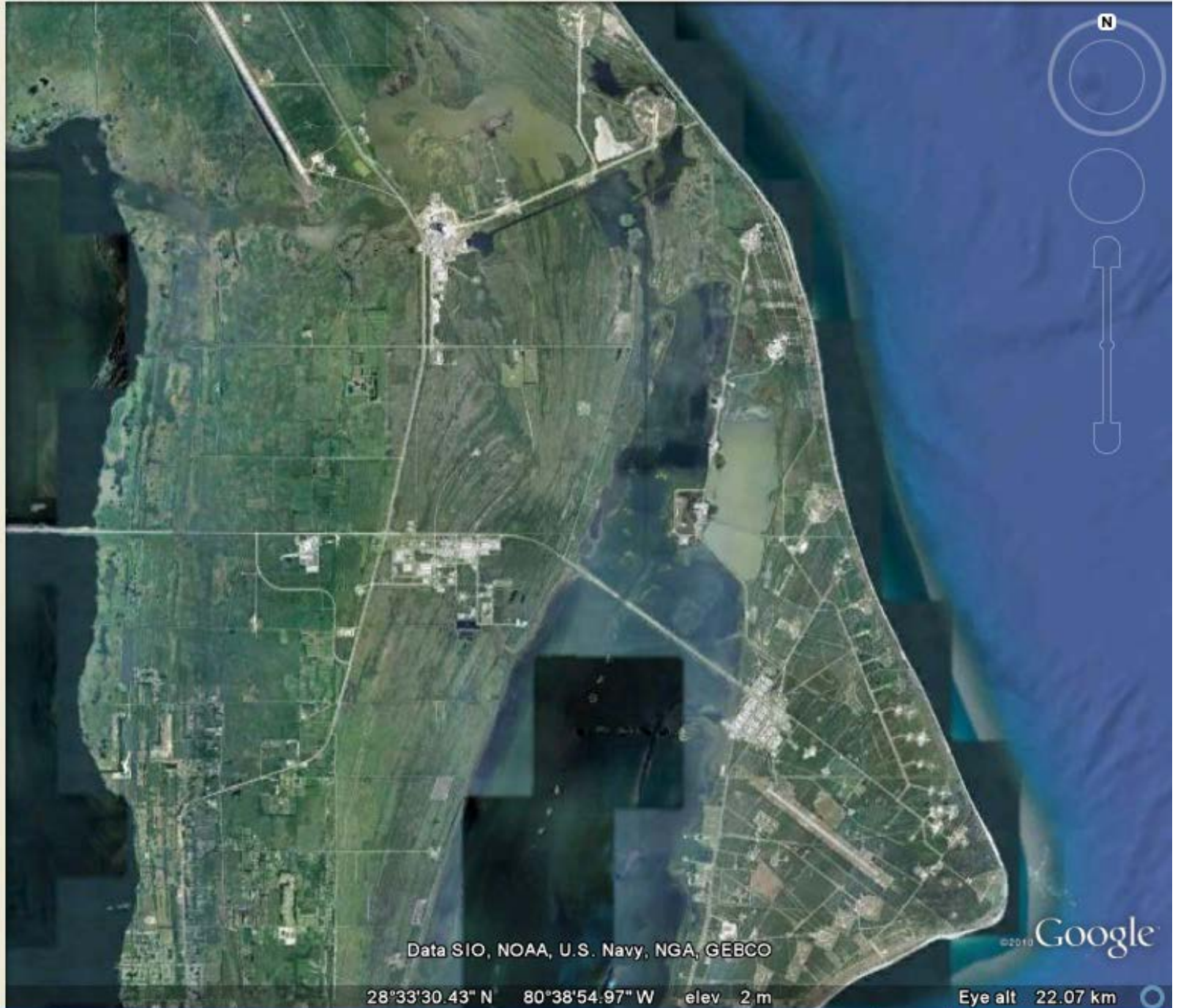


2:35 PM

PACIFIC
HISTORIC PARKS
Remember Honor Understand



Restoring the
USS *Arizona* Memorial



Data SIO, NOAA, U.S. Navy, NGA, GEBCO

28°33'30.43" N 80°38'54.97" W elev 2 m

Eye alt 22.07 km

Google



Data SIO, NOAA, U.S. Navy, NGA, GEBCO

©2013 Google

Imagery Date: Jan 1, 2007

28°35'33.01" N

80°37'54.48" W

elev 0 m

Eye alt 5.54 km

G..

N..

2

D..

?

Search Desktop

?

?

?

?

?

?

?

3:34 PM



Image U.S. Geological Survey

©2013 Google

Imagery Date: Feb 28, 2002

35°57'15.35" N

83°55'39.79" W

elev 280 m

Eye alt 961 m

ima...

Me...

Mic...

?

Search

Back

Forward

Home

App

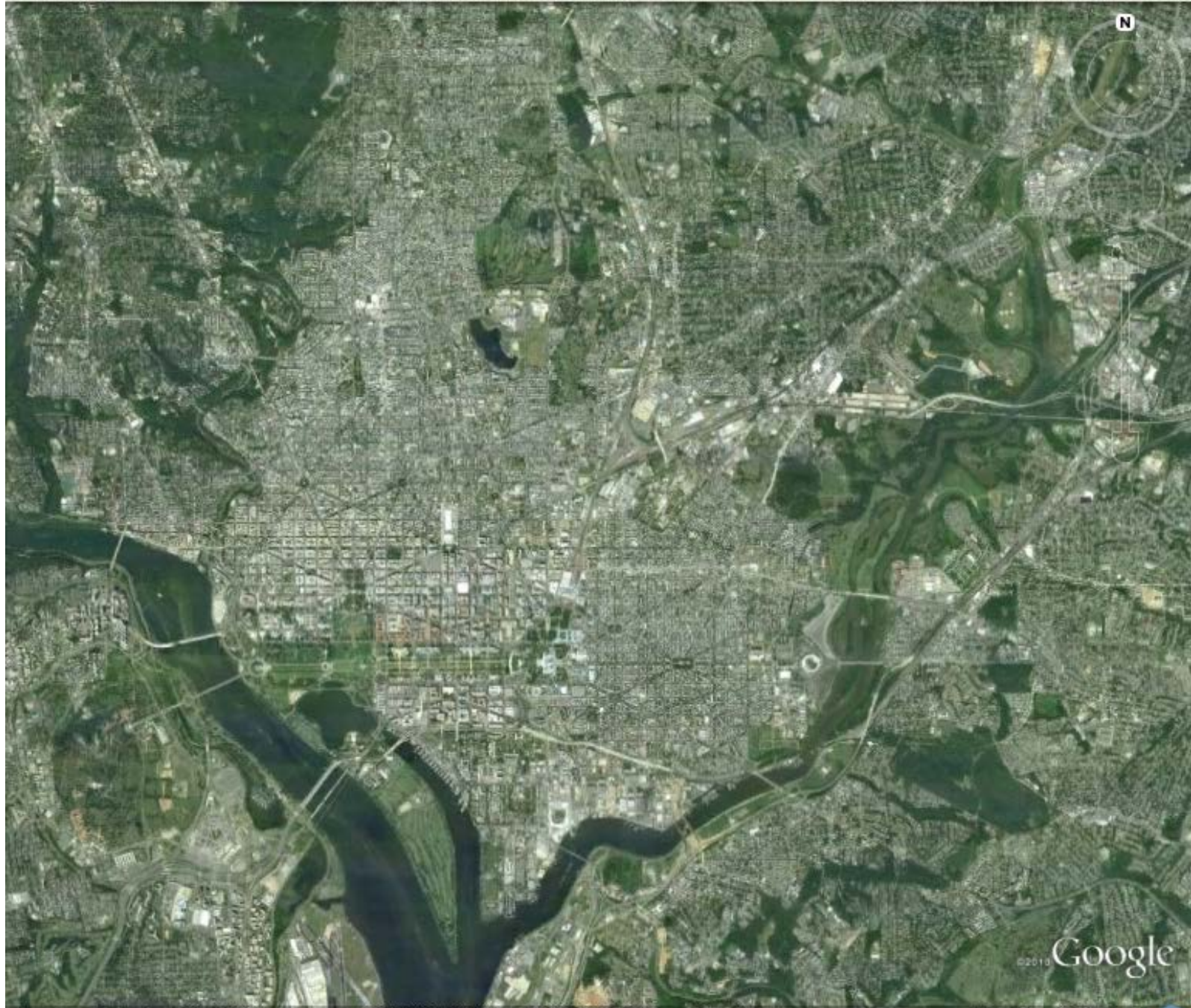
Window

Taskbar

System

3:27 PM





N

Google
©2013

Imagery Date: Aug 29, 2010

38°54'00.82" N 77°01'29.34" W elev 15 m

Eye alt 12.65 km

G..

N..

2

D..

?

Search Desktop

?

?

?

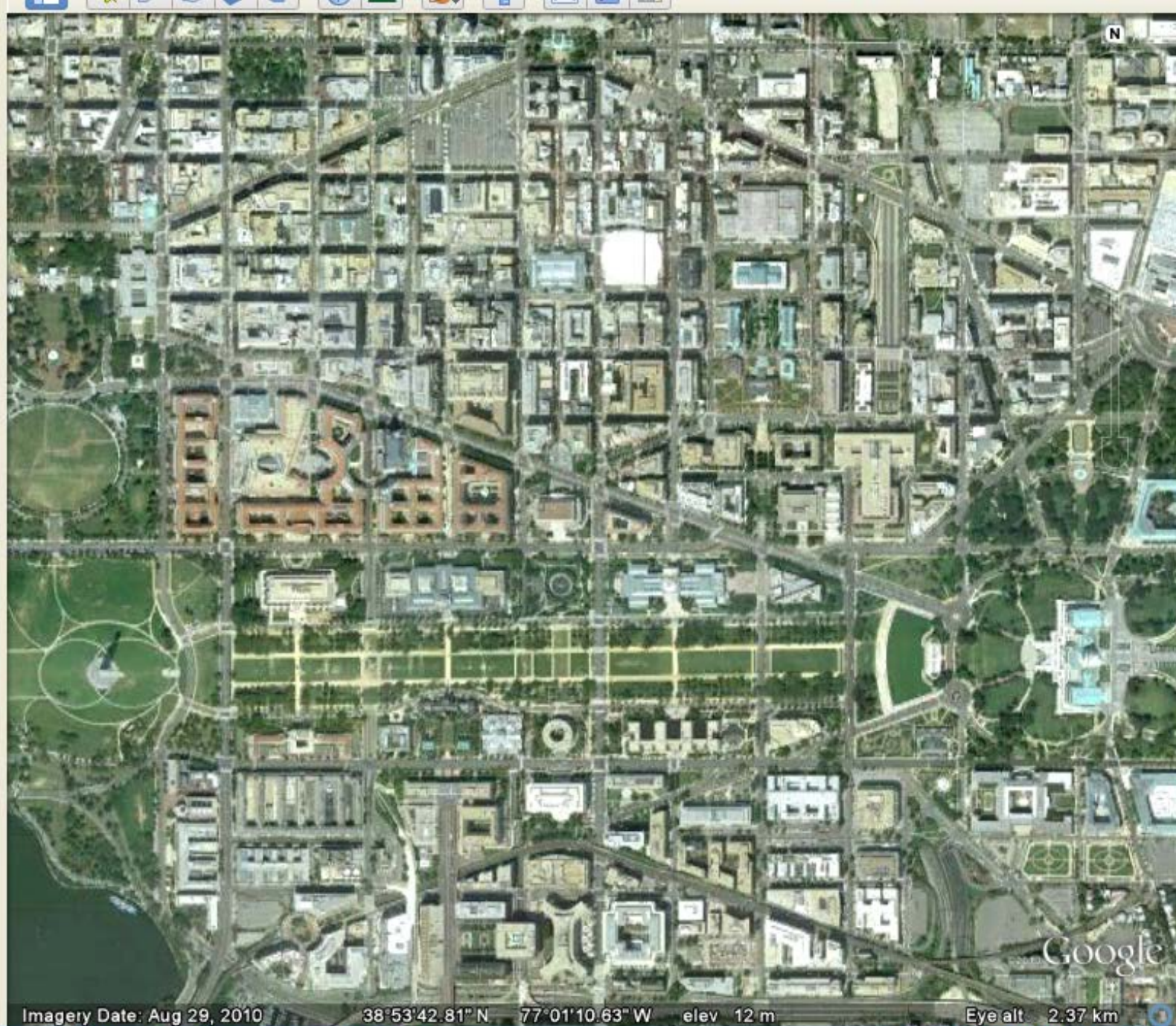
?

?

?

?

3:38 PM



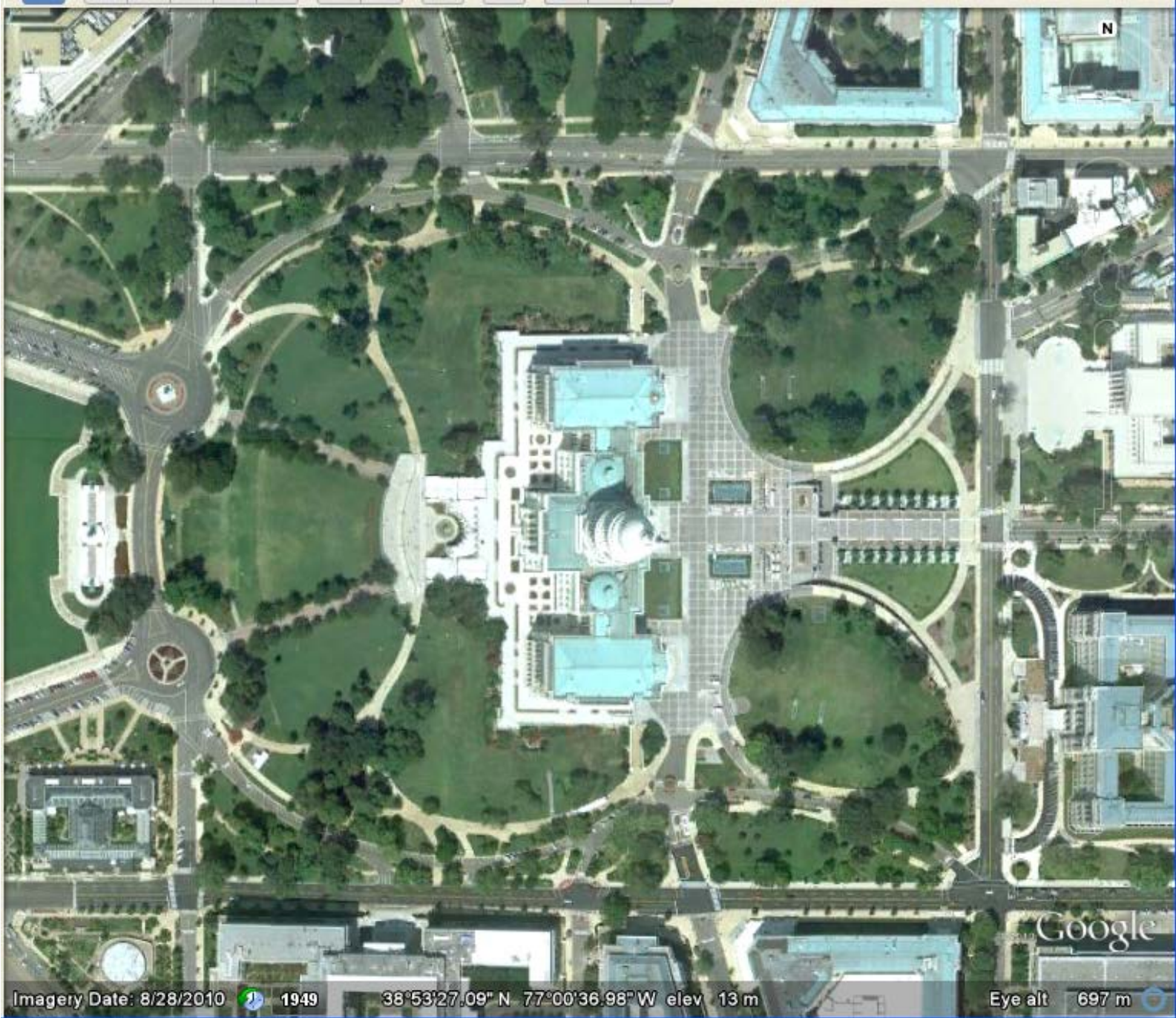
Imagery Date: Aug 29, 2010

38°53'42.81" N 77°01'10.63" W

elev 12 m

Eye alt 2.37 km





Imagery Date: 8/28/2010 1949 38°53'27.09" N 77°00'36.98" W elev 13 m

Eye alt 697 m

v...

Micros...

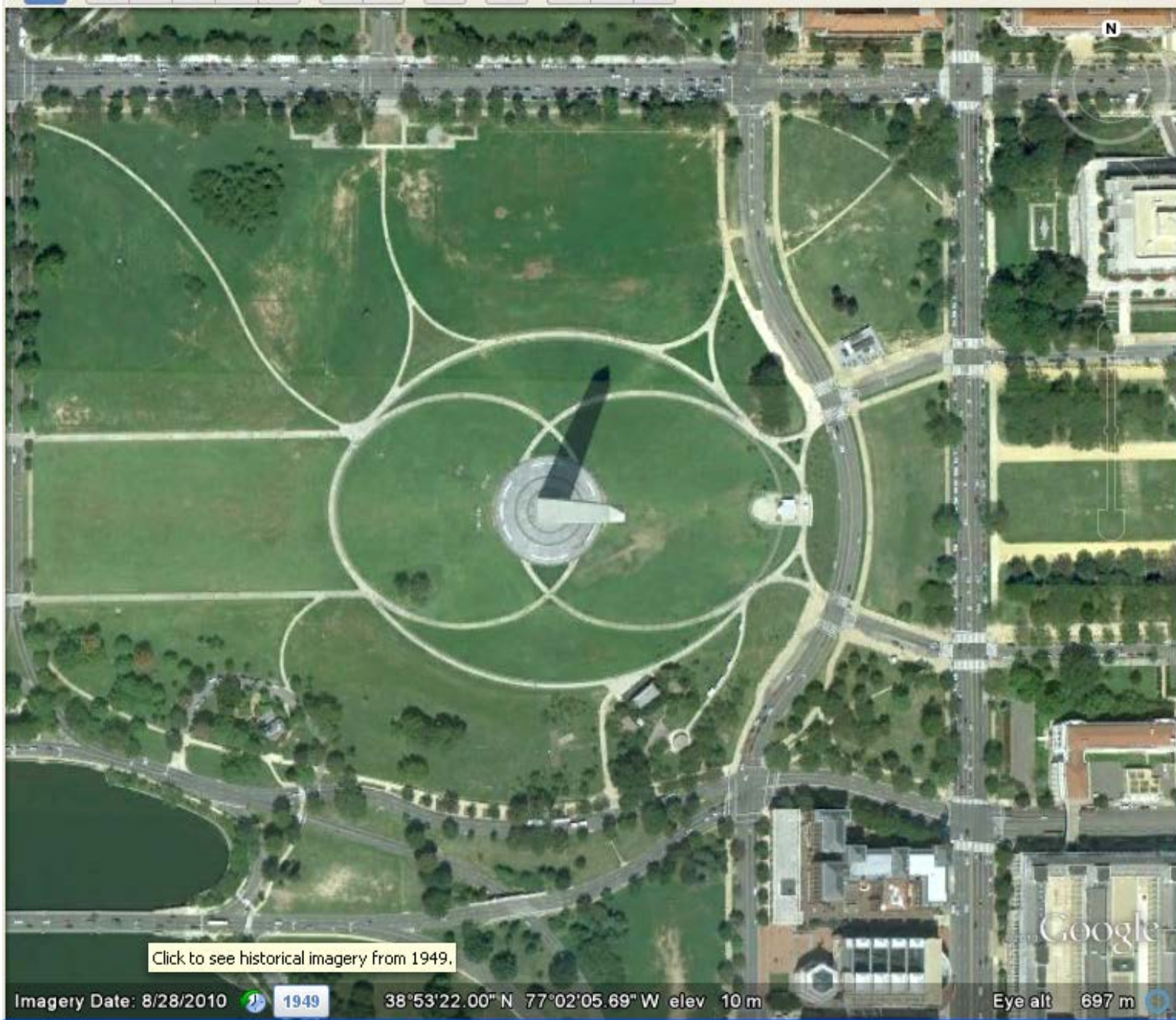
Google...



Search Desktop



1:49 PM



[Click to see historical imagery from 1949.](#)

Imagery Date: 8/28/2010



1949

38°53'22.00" N 77°02'05.69" W elev 10 m

Eye alt 697 m



v...

Micros...

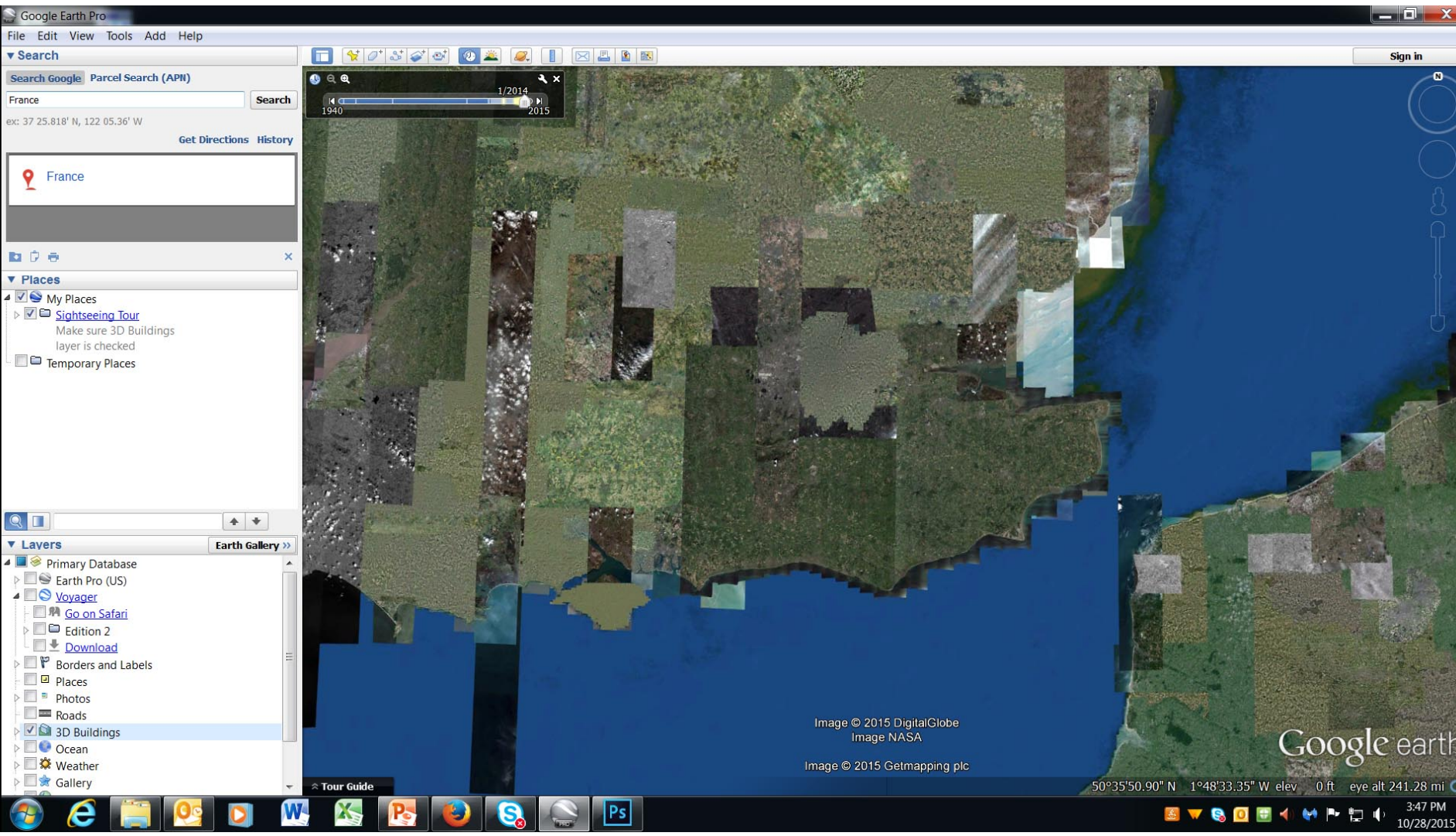
Google...

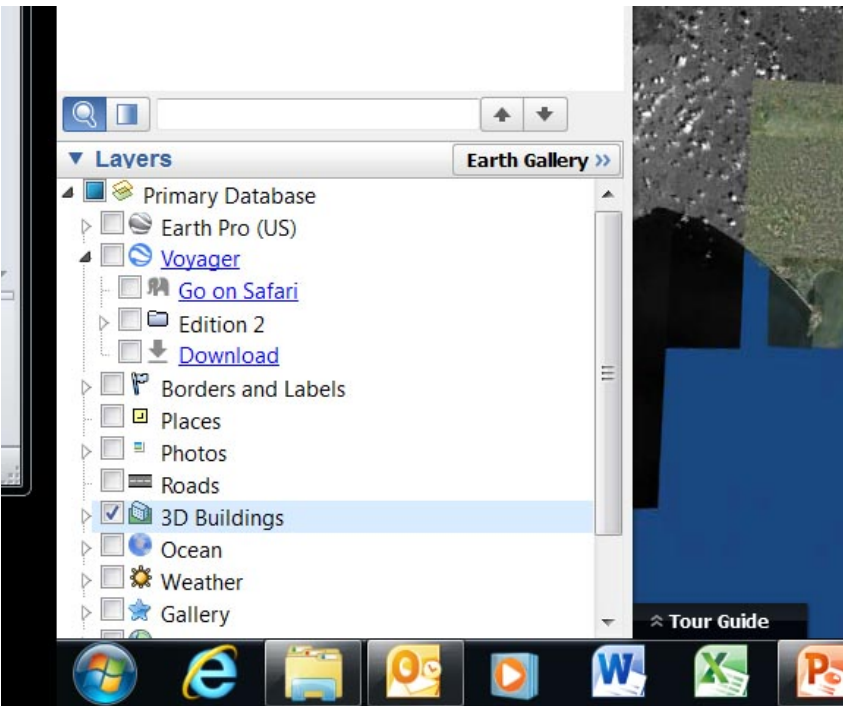
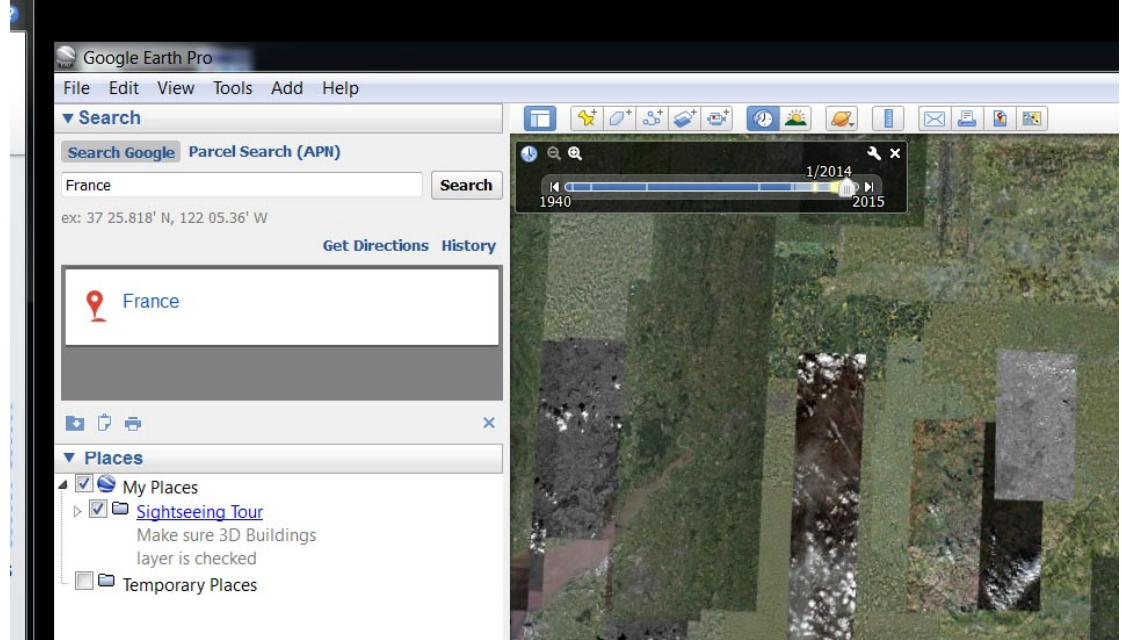


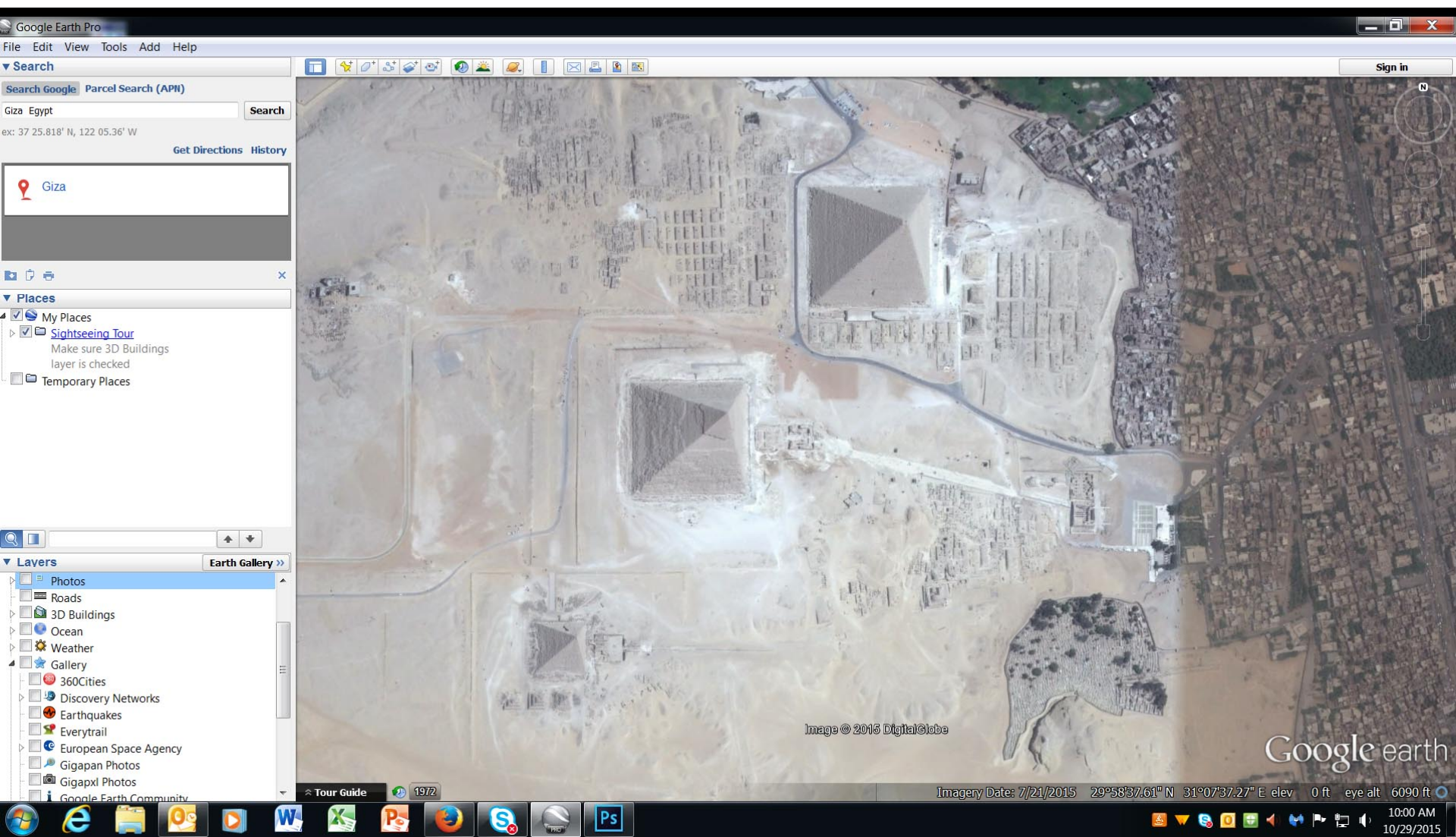
Search Desktop

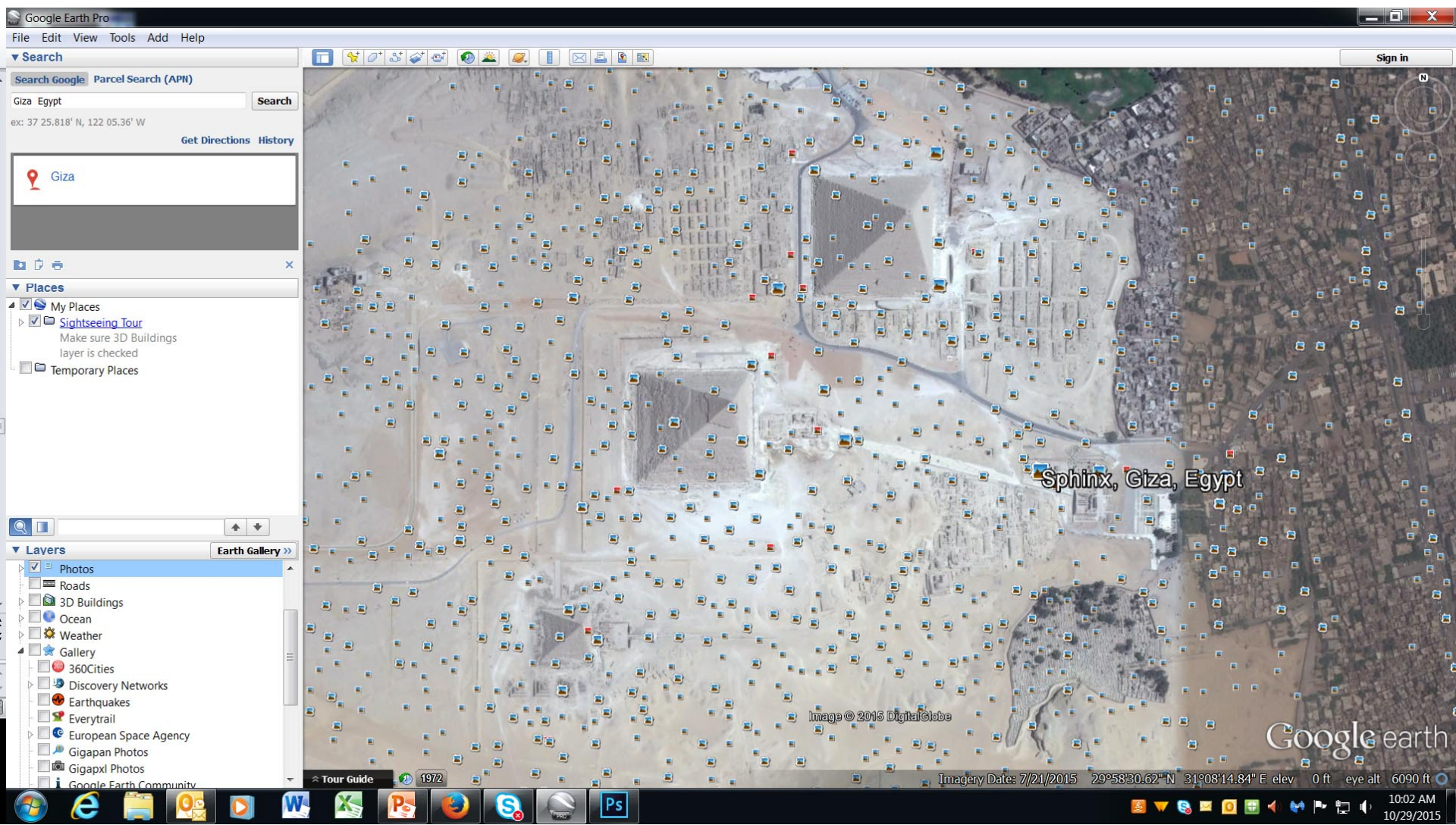


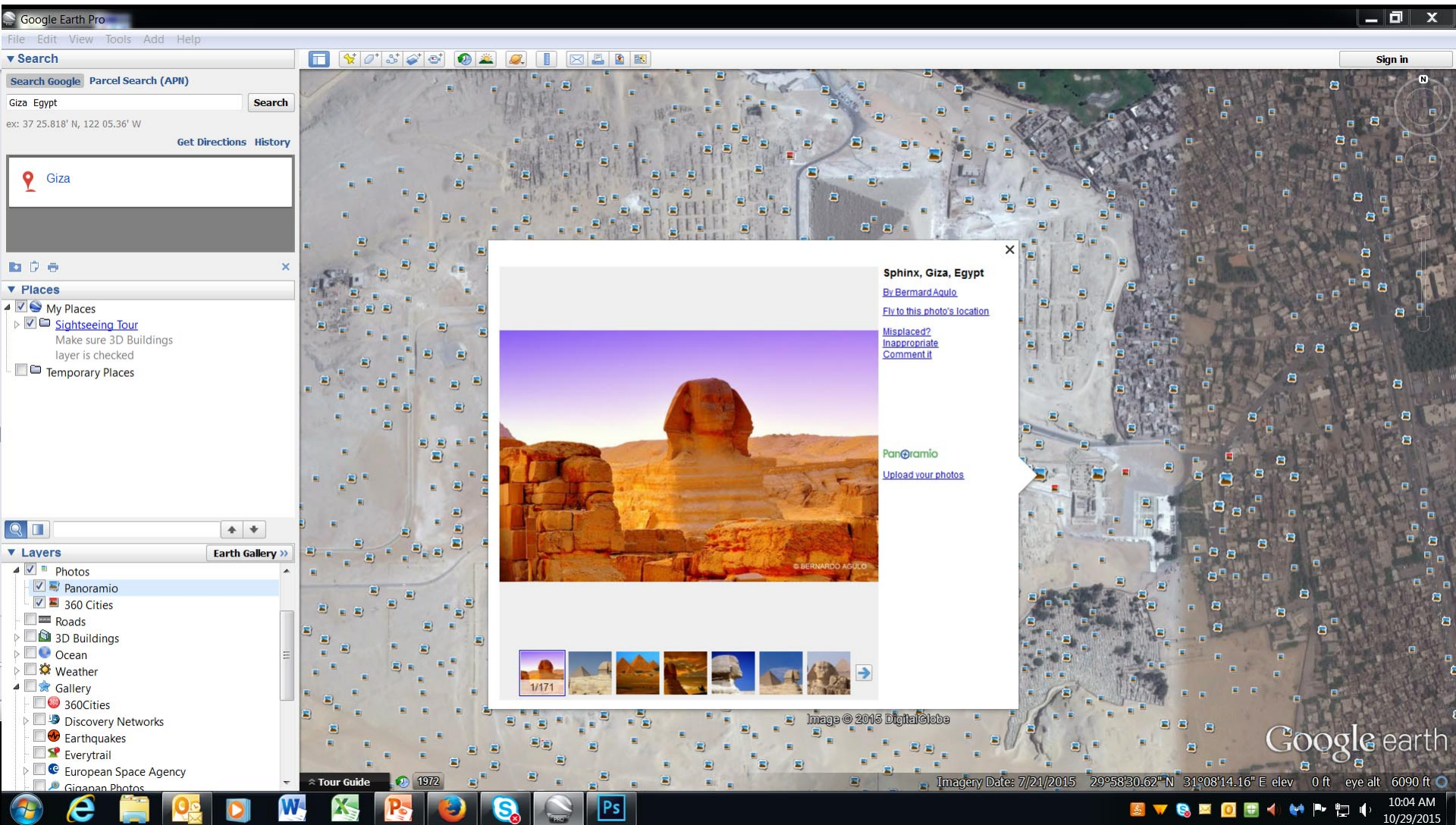
1:50 PM

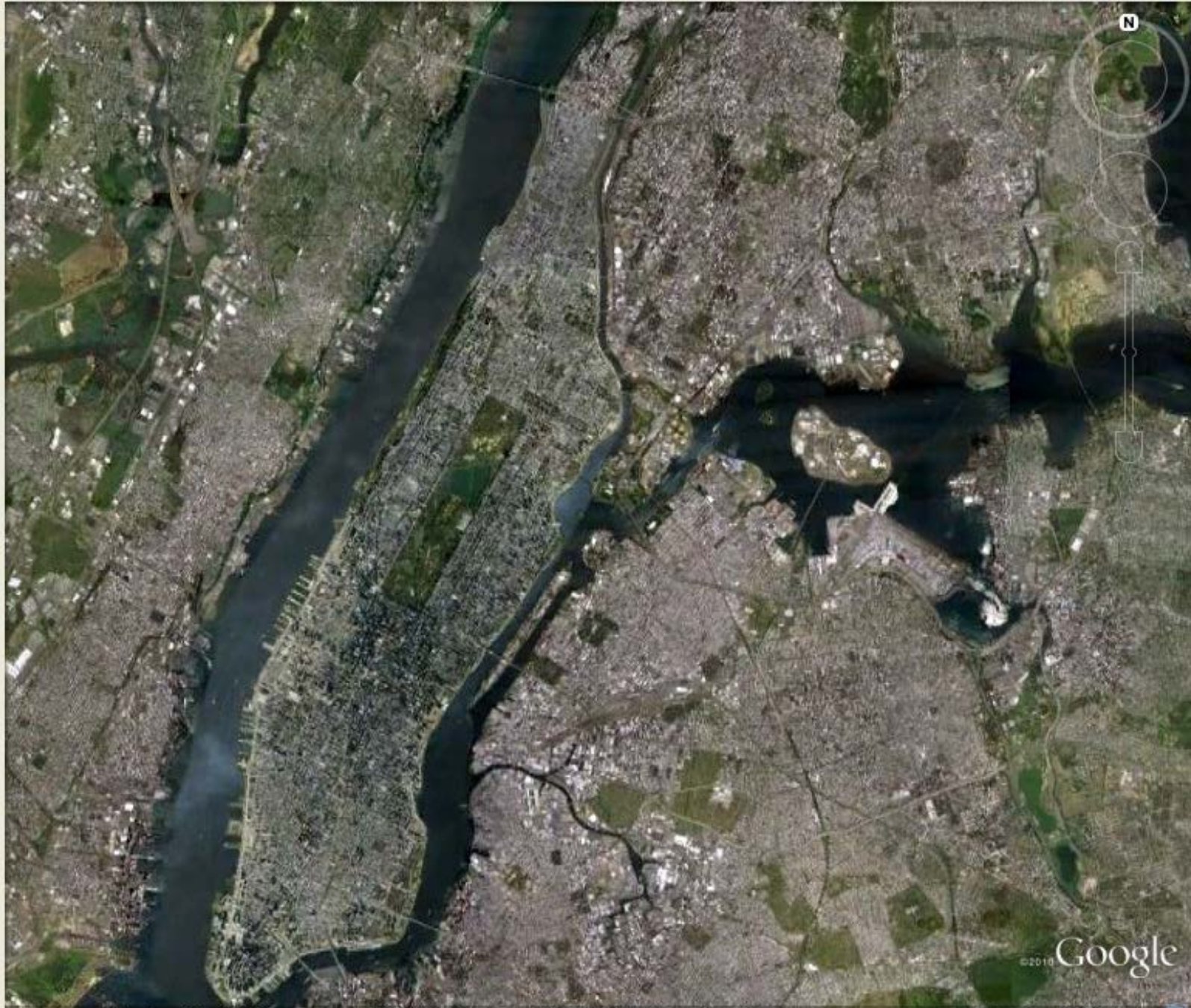












©2010 Google

Imagery Date: Jun 18, 2010

40°44'41.11" N

73°53'05.53" W

elev 16 m

Eye alt 18.80 km

ima...

Bris...

Mic...

?

Search

Back

Forward

Home

Windows

Taskbar

3:32 PM

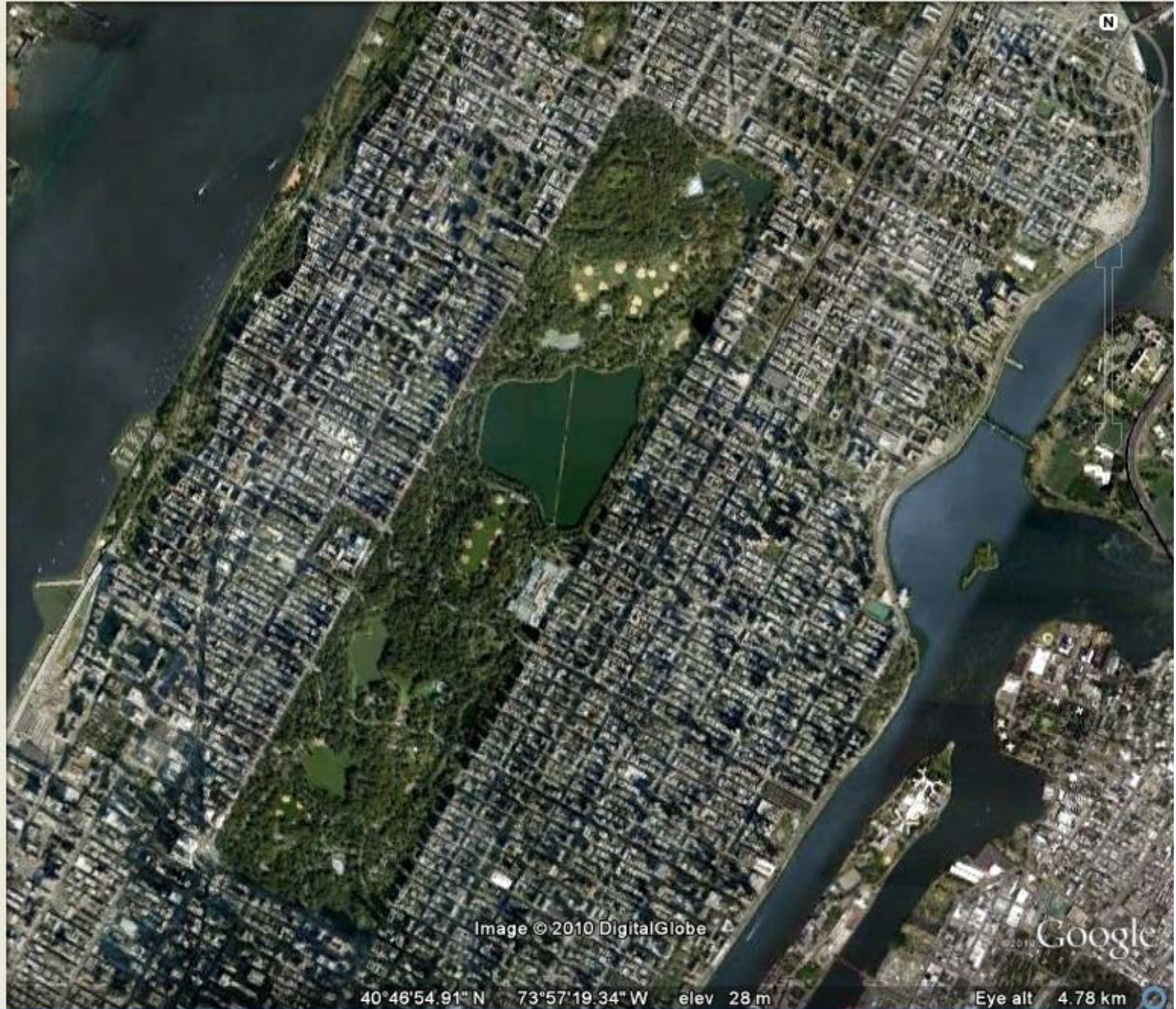


Image © 2010 DigitalGlobe

Google

40°46'54.91" N 73°57'19.34" W elev 28 m

Eye alt 4.78 km

ima...

Bris...

Mic...

?

?

?

?

?

?

?

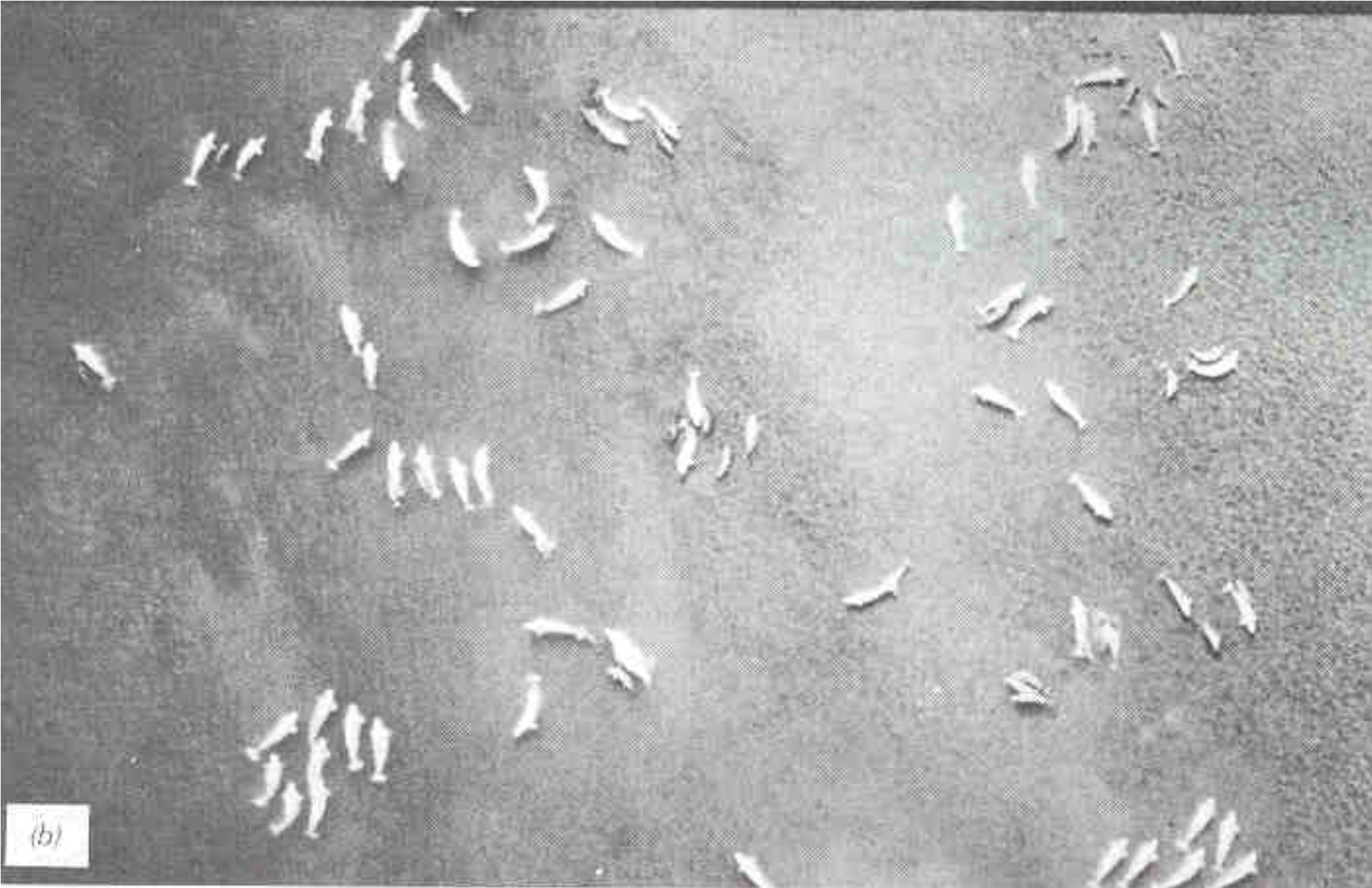
?

?

?

?

?



Beluga whales, Somerset Island, northern Canada taken with Kodak Water Penetration Color Film.







©2010 Google

Image USDA Farm Service Agency

Imagery Date: Jun 6, 2007

35°55'11.33" N 84°30'25.19" W elev 268 m

Eye alt 4.61 km

Aerial Image Of Kingston Ash Slide 12/23/08



0 250 500 1,000 1,500 2,000
Feet

Tennessee Valley Authority
CE&E - EHS&S
Geographic Information and Engineering

